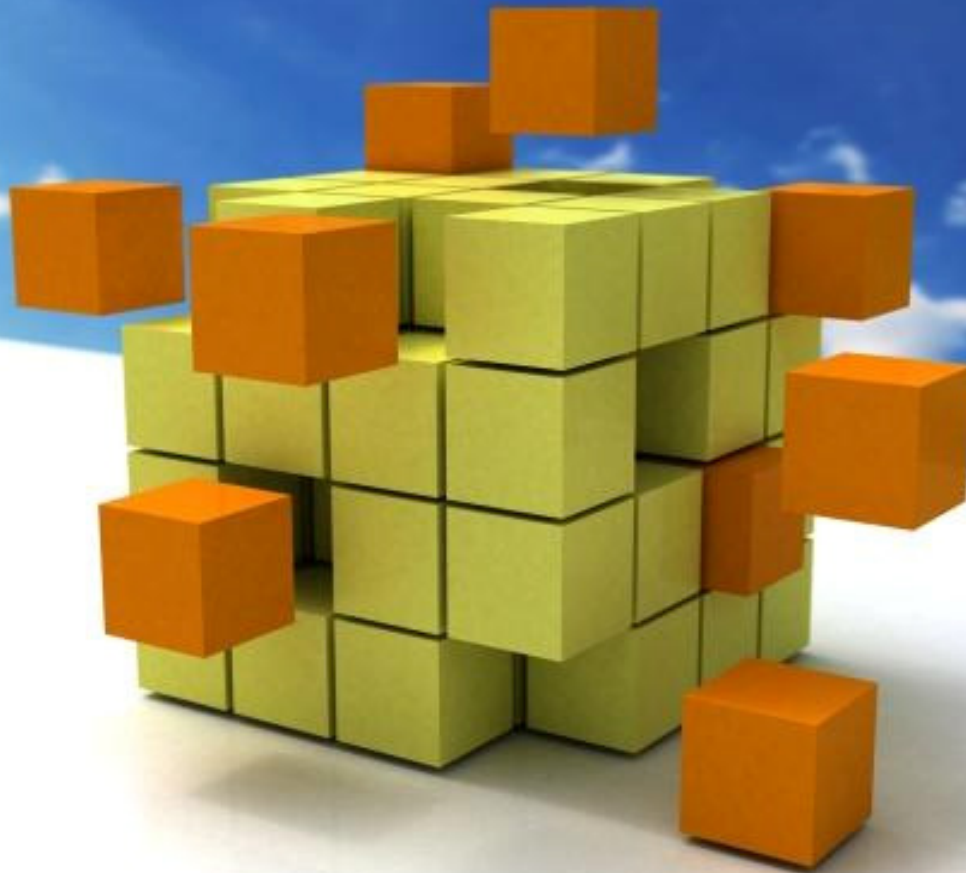


State of play on NSDI in Moldova

E&I workshoop 29. of January 2014

Tomaž Petek



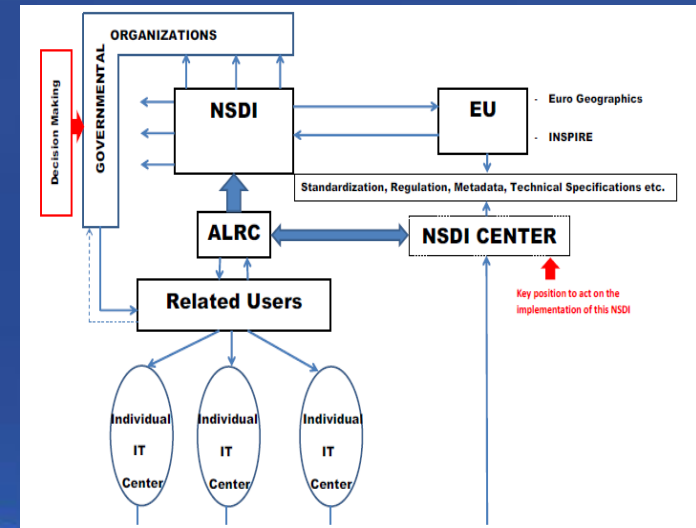
Aim of presentations

- Background, objectives and Outputs of the Report
- COMPONENT 1: NSDI COORDINATION AND ORGANIZATIONAL ISSUES
- COMPONENT 2: LEGAL FRAMEWORK AND FUNDING
- COMPONENT 3: REFERENCE DATA AND CORE THEMATICS DATA SETS
- COMPONENT 4: METADATA DESCRIPTION
- COMPONENT 5: WEB SERVICES FOR SPATIAL DATA (access, view and download)
- COMPONENT 6: USE CASES AND EFFICIENCY OF THE NSDI
- COMPONENT 7: STANDARDS



COMPONENT 1: NSDI COORDINATION AND ORGANIZATIONAL ISSUES

- **LEVEL OF SDI** – there is no initiative with a name, structure or organisation responsible and or legislation/strategy at the national level but there are many efforts to bring together stakeholders, (partly already formalised as GIS committee)
- **DEGREE OF OPERATIONALITY** - many components of the SDI have reached a significant level of operationally in Moldova (metadata, data, services, data policy, legal framework, organisational structure)



COMPONENT 1: NSDI COORDINATION AND ORGANIZATIONAL ISSUES

- **COORDINATION** – Agency for land relations and cadastre as a major producer of GI. GIS Committee as officially recognised and de facto coordinating body for the SDI. Data users or ‘national GI-association’ are still not strong involved in the coordination of the SDI. This task is mentioned in DIGITAL MOLDOVA STRATEGY
- **PARTICIPANTS** - at the moment producers and users of spatial data in Moldova are public sector bodies, participants from private and non-government sector or/and academia are limited involved.



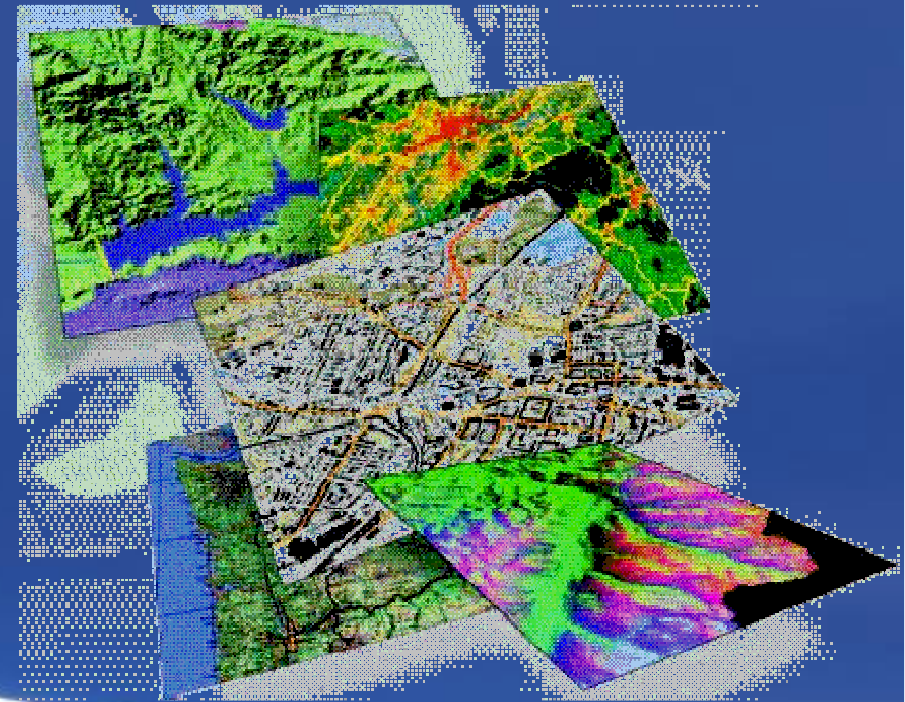
COMPONENT 2: LEGAL FRAMEWORK AND FUNDING

- LEGAL FRAMEWORK (list of legal acts and new EC Twinning – legalisation related NSDI will be reviewed 2014-2016)
- PRIVATE PUBLIC PARTNERSHIP Law on Public-Private Partnerships in year 2008 (75% EBRD score).
- POLICY AND LEGISLATION ON ACCESS TO PUBLIC SECTOR INFORMATION (PSI) [Law on the Access to Information \(2000\)](#)
- LEGAL PROTECTION OF GI BY INTELLECTUAL PROPERTY RIGHTS Law No. 139 of July 2, 2010 on Copyright and Neighbouring Rights
- RESTRICTED ACCESS TO GI FURTHER TO THE LEGAL PROTECTION OF PRIVACY Act No. 133/2011 on personal data protection in Moldova
- DATA LICENCING (password system at geoportal)
- FUNDING MODEL FOR SDI AND PRICING POLICY Under discussion



COMPONENT 3: REFERENCE DATA AND CORE THEMATIC DATA SETS

- SCALE AND RESOLUTION (LEVEL OF DETAILS)
- GEODETIC REFERENCE SYSTEM AND PROJECTIONS
- QUALITY OF REFERENCE DATA & CORE THEMATIC DATA
- INTEROPERABILITY
- LANGUAGE AND CULTURE



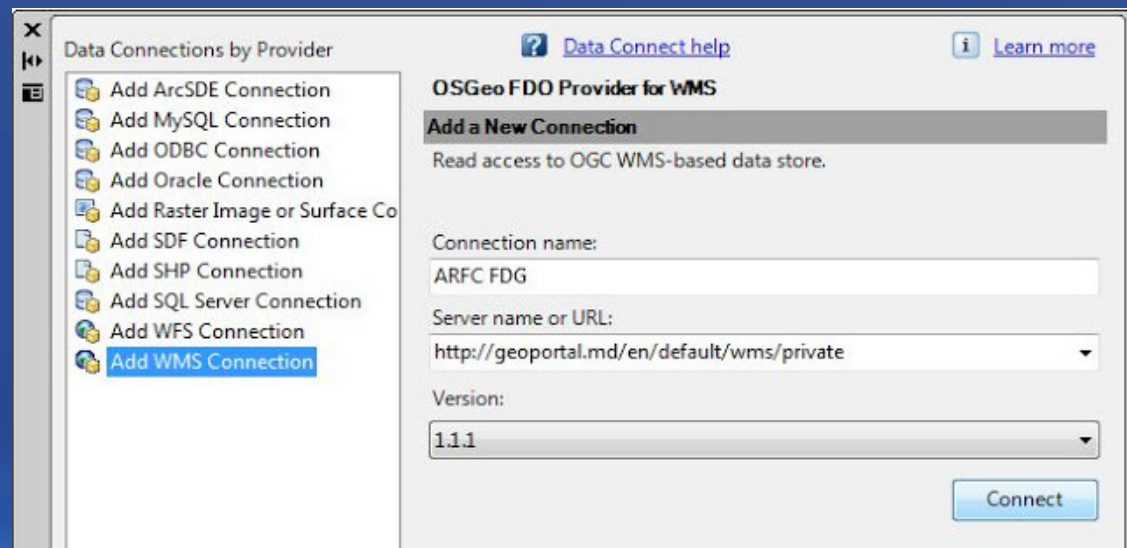
COMPONENT 4: METADATA DESCRIPTION

- **AVAILABILITY METADATA** - metadata are produced for a significant fraction of geodatasets of the themes of the INSPIRE annexes (Moldavian geoportal www.geoportal.md)
- **METADATA CATALOGUE AVAILABILITY AND STANDARDS** – at least two standardised metadata catalogues are available covering more than one data producing agency. (38 spatial datasets in geoportal)
- **METADATA IMPLEMENTATION** – there is no formal coordinating authority for metadata implementation at the level of the SDI, but operationally this is done by ALRC (metadata description for datasets exist at Ministry of Environment, Ministry of Culture and City of Chisinau)



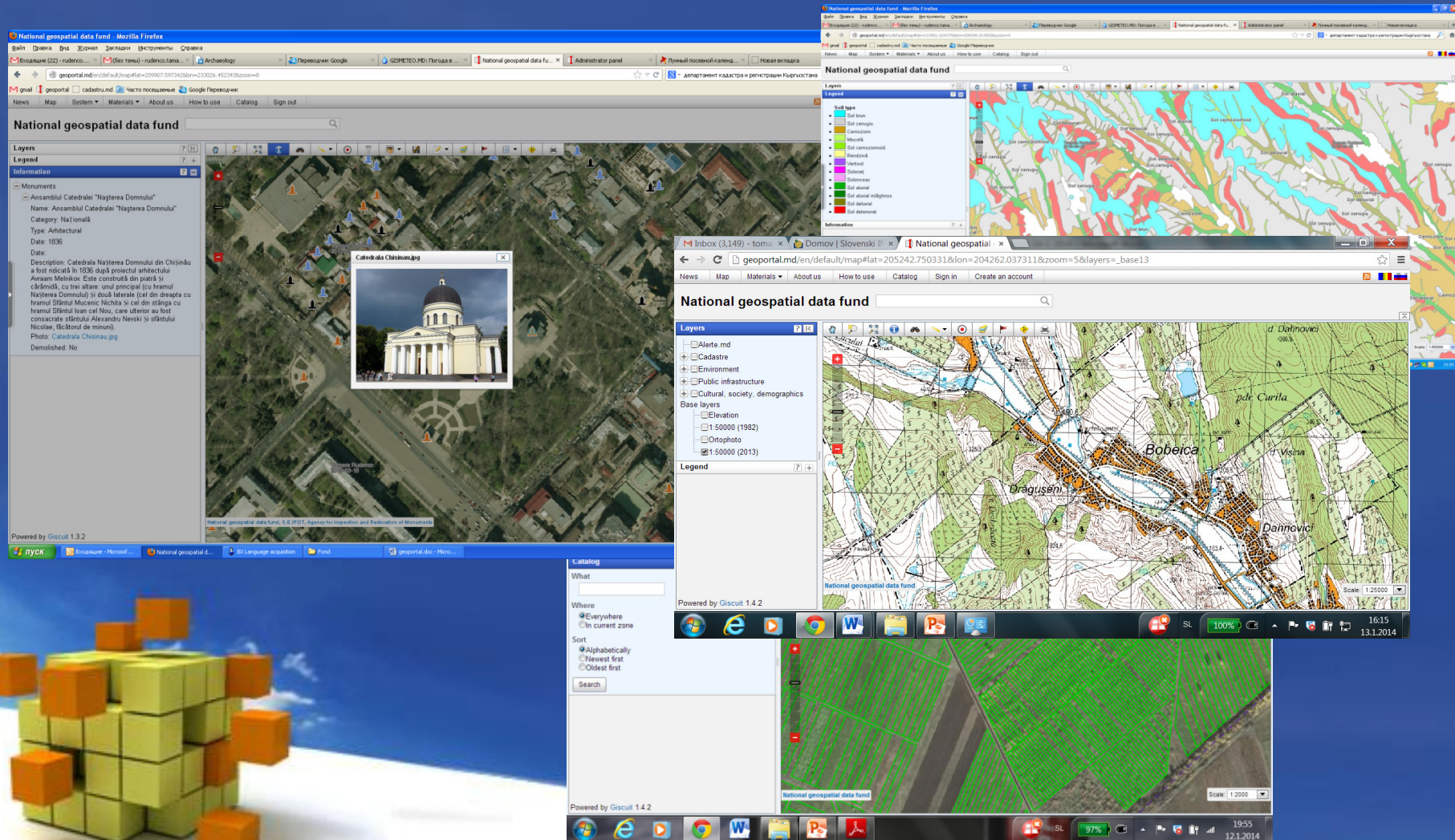
COMPONENT 5: WEB SERVICES FOR SPATIAL DATA

- DISCOVERY SERVICES – several portals offer discovery
- VIEW SERVICES – at national geoportal, WMS and WFS services are available
- DOWNLOAD SERVICES – at geoportal for registered users
- TRANSFORMATION SERVICES – no available at the moment
- INVOKING SERVICES – no available at the moment



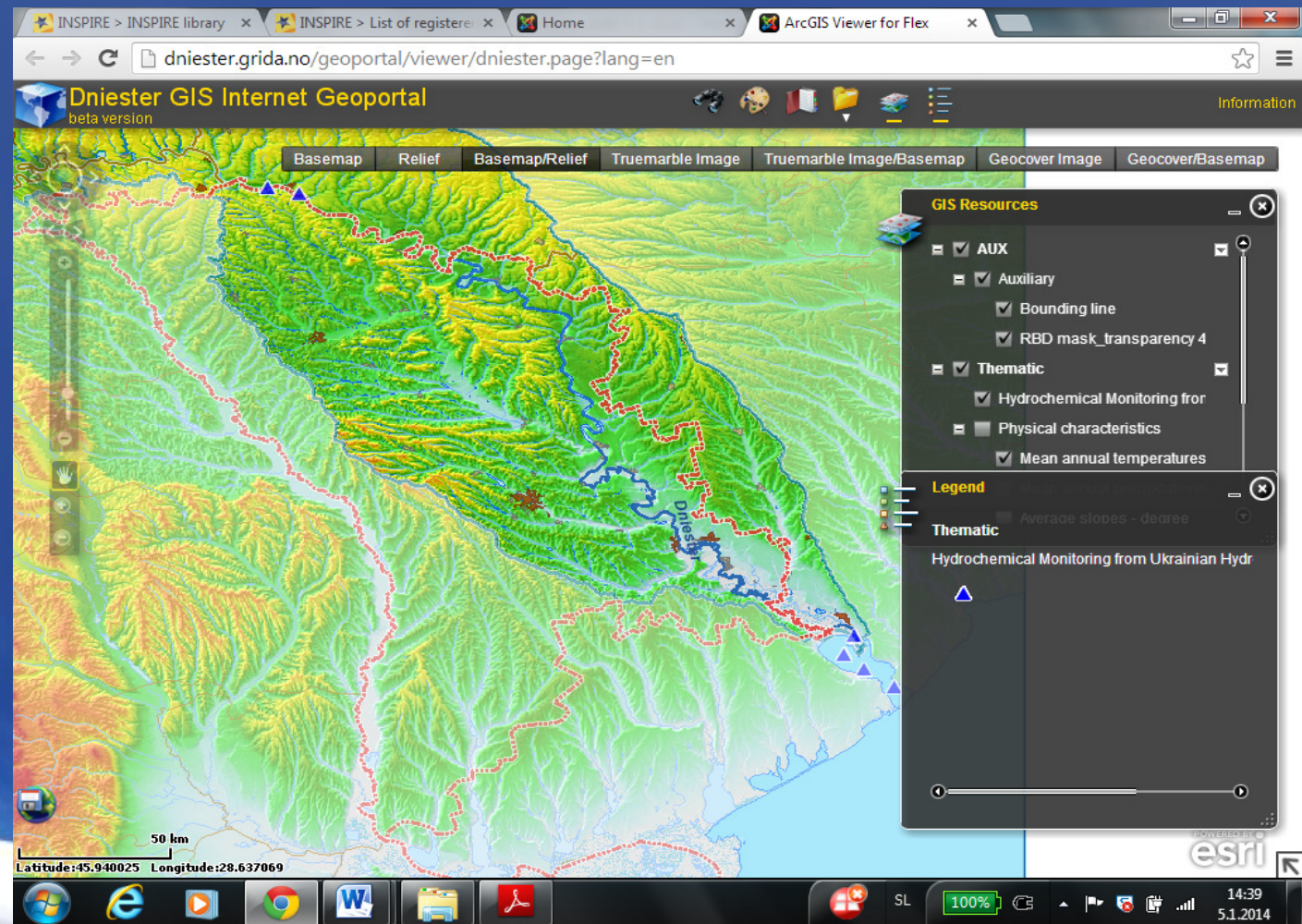
COMPONENT 6: USE CASES AND EFFICIENCY OF THE NSDI

– National geospatial data fund (www.geoportal.md)



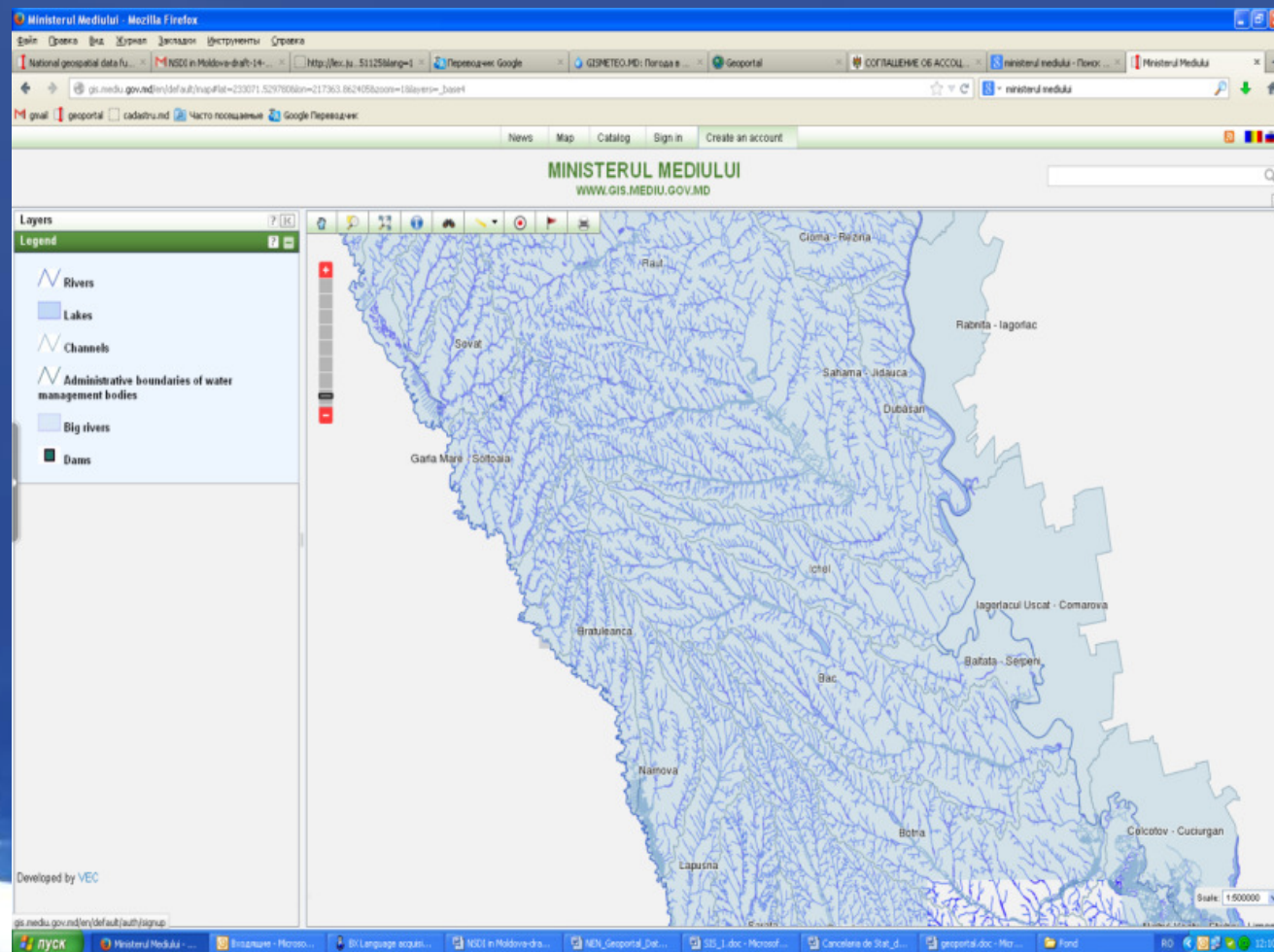
Dniester GIS

- www.dniester.grida.no/geoportal/viewer



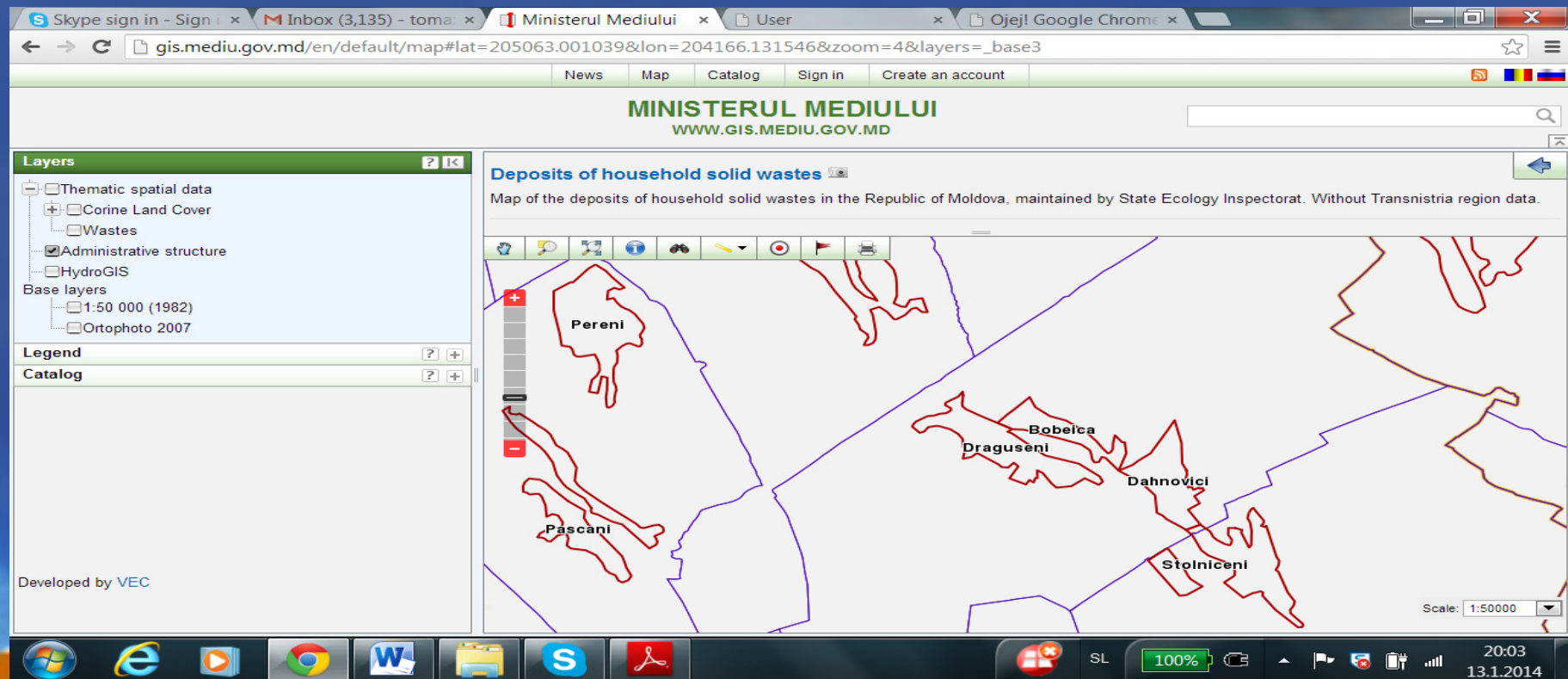
Water Agency of Moldova

- www.gis.meniu.gov.md



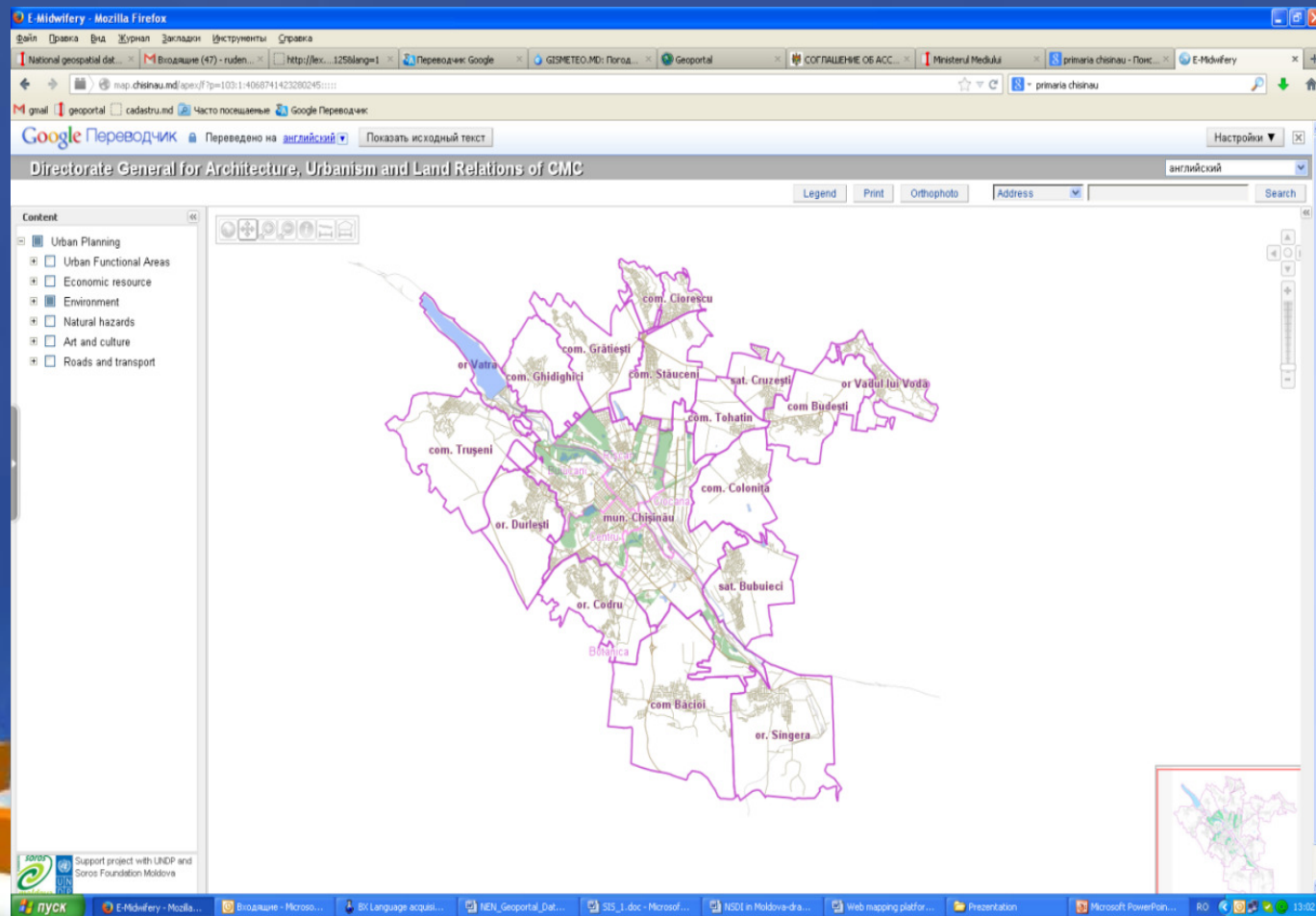
Ministry of Environment of Moldova

- www.gis.meniu.gov.md



Municipality of Chisinau

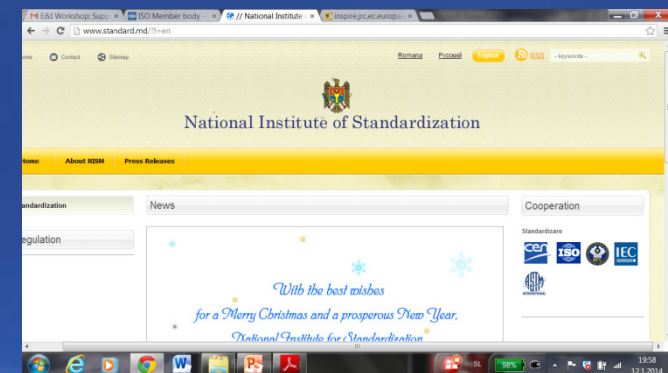
- www.map.chisinau.md



COMPONENT 7: STANDARDS

- describe how is national standardisation realised for geographical information in Moldova?
- The central specialized body from the public administration responsible for the quality infrastructure is the Ministry of Economy. In conformity with the Law on standardization N° 590-XIII of 1995.09.22, the Ministry of Economy establishes the standardization policy.
- In January 2013, the National Institute for Standardization and Metrology of Moldova (INSM) was reorganized and split into two separate institutions: the National Standardization Institute (INS) and the National Metrology Institute (INM).

www.standard.md



CONCLUSIONS

- LEGAL BACKGROUND (New EC Twinning and some Taieix for strategy for NSDI and action plan)
- ORGANISATION (GIS Committee into NSDI Board)
- INTEROPERABILITY OF SPATIAL DATA (update metadata editor in conformance with INSPIRE, technical improvement for establishing vector topographical data base and updating existing SW or developement new one)
- NETWORK SERVICES (licencing, data policy, within e-government initiative)
- NEED OF CAPACITY BUILDING (traininng, and awarenes raising program)
- FEASIBILITY STUDY and COSTS ESTIMATION



THANK YOU !

Tomaž Petek
e-mail: tomaz.petek@gov.si

